

AHL-W180V LASER MOLD WELDING MACHINE

AHL-W180V大型激光模具焊接机

主要应用

主要用于S136, SKD-11, NAK80, 8407, 718, 738, H13, P20, W302, 2344等模具钢、碳钢、普通合金钢、不锈钢、铍铜、紫铜和极硬合金材料的塑胶模具、铸造模、锻造模、冲压模、压铸模等。普遍应用于手机、数码产品、汽车及摩托车等模具制造和成型行业。

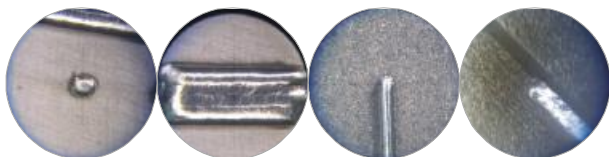
Product application

used to S136, SKD-11, NAK80, 8407, 718, 738, H13, P20, W302, 2344 titanium, nickel, tin, copper, aluminum, chromium, niobium, gold, silver, steel and their alloys.

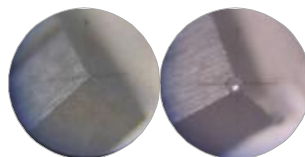


AHL-W180V

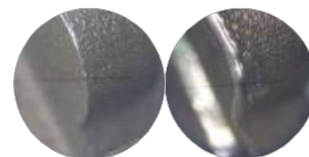
Welding samples



焊点/平面/线/内角 Welding spot / plan / line angle



焊棱角 Welding corner



焊外棱角 Welding outer angle

设备技术参数	W180V 激光模具焊接机	Technology Parameters	W180V MOLD WELDER
最大激光功率	180W	Max. laser power	180W
激光波长	1064nm	Laser wave-length	1064nm
波形数量	16组	Wave shape quantity	16 groups
单脉冲最大能量	110J	Single pulse energy	110J
激光焊接深度	0.1 - 3mm	Welding depth	0.1 - 3mm
脉冲宽度	0.3 - 20ms	Pulse width	0.3 - 20ms
连击时激光焊接频率	0.5 - 20Hz	Welding frequency	0.5 - 20Hz
光斑尺寸可调范围	0.2-2mm	Spot size	0.2-2mm
激光焊丝	Φ0.2-Φ0.8 mm	Laser welding wire	Φ0.2-Φ0.8 mm
整机耗电功率	≤9KW	Power consumed	≤9KW
电力需求	220VAC 50Hz/60Hz	Electrical source	220VAC 50Hz/60Hz
观察系统	显微镜	Positioning	Microscope
激光器移动方式	电动	mobile	Electric
XYZ工作行程(mm)	200×200×300	xyz itinerary (mm)	200×200×300